




**S.I.W.S.**  
**N. R. SWAMY COLLEGE OF COMMERCE & ECONOMICS**  
**AND**  
**SMT. THIRUMALAI COLLEGE OF SCIENCE**

Plot No. 337, Sewri - Wadala Estate,  
Major R. Parameshwaran Marg, Wadala, Mumbai - 400 031

**INDEX 4.2.1- ILMS**

<b>Sr. No.</b>	<b>Subscription</b>	<b>Page No.</b>
1.	Slim Software Proforma Invoice & Receipt	02-03
2.	Slim Modules and Function Details	04
3.	Screen shots of Slim Interface	05-10
4.	Cover page of a book with barcoding	11
5.	Inner page of the book with barcoding	12

  
Principal

PRINCIPAL  
S.I.W.S. N.R. Swamy College of  
Commerce & Economics and  
Smt. Thirumalai College of Science,  
Wadala, Mumbai - 400 031



72200PN2001PTC016448

# algorhythms


CONSULTANTS PVT. LTD.  
ISO 9001 : 2008

PROFORMA INVOICE		INVOICE No. 18/102	Date :08.05.18
SIWS N R Swamy College, Wadala Major Parmeshwaran Marg Wadala, Mumbai 400031			
		Amount	in
		Rs.	
1.	Operational Guidance and Support for SLIM21 for the period of 1 <sup>st</sup> July 18 to 30 <sup>th</sup> June 19.  The SLIM21 Modules presently implemented at library are:  Cataloguing System Circulation System Acquisition System Serials Control System Web OPAC  The AMC charges are 15% of the cost of the modules = Rs.23,250/-  GST 18% 4185/-	23,250/-	
Rs. Twenty Seven Thousand Four Hundred Thirty five Only			27,435/-

3

Payment Terms: Immediately

For ALGORHYTHMS Consultants Pvt. Ltd.

*Lakshmi Mishra*  
  
 Mrs. Lakshmi Mishra

*Mis*  
*29/5/18*  
*29/5/18*

*[Signature]*  
 PRINCIPAL  
 S.I.W.S. N.R. Swamy College of  
 Commerce & Economics &  
 Smt. Thirumalai College of Science,  
 Wadala, Mumbai 400 031



**algorhythms**  
**CONSULTANTS PVT. LTD.**  
 3, Pranav, S.No. 98, Bhusari Colony,  
 Paud Road, Kothrud, Pune - 38, India.

Date: 25/06/2018  
 No.: 020

RECEIVED with thanks from M/s. SIKS N R Swamy College of  
 Commerce & Economics  
 the sum of Rs. Twenty Seven Thousand four Hundred Thirty five  
 Only -  
 by Cash / Cheque in Advance / Full / Part payment of our AMC  
 Bill No. \_\_\_\_\_ dated \_\_\_\_\_

Rs. 27435/- for Algorhythms Consultants Pvt. Ltd.  
 Kanur Vyaya bank  
 Mawanga Mumbai-19  
 Cheque # 000127  
 Dt. 12/06/2018

ISSUED SUBJECT TO REALISATION

*[Signature]*  
 Director



*[Signature]*

PRINCIPAL  
S.N.R. Swamy College of  
Commerce & Economics &  
Smt. Thirumalai College of Science,  
Wadala, Mumbai - 400 031

Colony, Paud Road,  
Pune 411 038.



91 20 25284796, 25281066  
sales@slimkm.com  
www.slimkm.com

W

Algorithms

Installation Acceptance Report

Doc. No: ACPL/PRD/20

Modules on the CD (Tick mark the tested Modules)

- |   |  |                            |
|---|--|----------------------------|
| <input checked="" type="checkbox"/> Cataloguing | <input checked="" type="checkbox"/> Utilities      | 11) MARCCCF Import /Export |
| <input checked="" type="checkbox"/> Circulation | <input checked="" type="checkbox"/> WEB Aware OPAC | 12) ILL                    |
| <input checked="" type="checkbox"/> Acquisition | 8) CAS   | 13) DBBridge               |
| <input checked="" type="checkbox"/> Serials     | 9) SDI   | 14) Web Proposal           |
| 5) OPAC   | 10) Statistics                                     | 15) Library Map            |

Procedure followed (Tick mark wherever Applicable) 123

- Uninstalled from the said machine
- Installed on the said machine
- Created or upgraded the database for the required version.
- Copied files from Patch folder if present

Name of the module and function details	Working Yes/no
TaskBAR - Check icons on task bar	Yes
Icons should be as per modules to be delivered	✓
Click each ICON - Respective application starts	✓
Cataloguing	Yes
Adding a new Item in the Library	✓
Editing an existing item (change title, keyword, abstract)	✓
Editing newly added record (change title, keyword, abstract)	✓
View Card (Standard format).	✓
Delete an existing record.	✓
Add / Edit Access points.	✓
Detail Edit	✓
Search on access points (Keywords, ISBN etc.).	✓
Status of an item (Item under Acquisition).	✓
Reports (Display list, Card, accession register).	✓
Accession Register entries (Accnreg).	✓
Circulation	Yes
Title based Circulation and Reservations.	✓
Reservation Queue and Issue according to the queue.	✓
Borrowers list	✓
Overdue Notice Mail.	✓
Letters.	✓
Reports: Accession Number Wise/Borrower wise, Daily log.	✓
Borrowers ID card with bar code	✓
Accession # barcode	✓

2

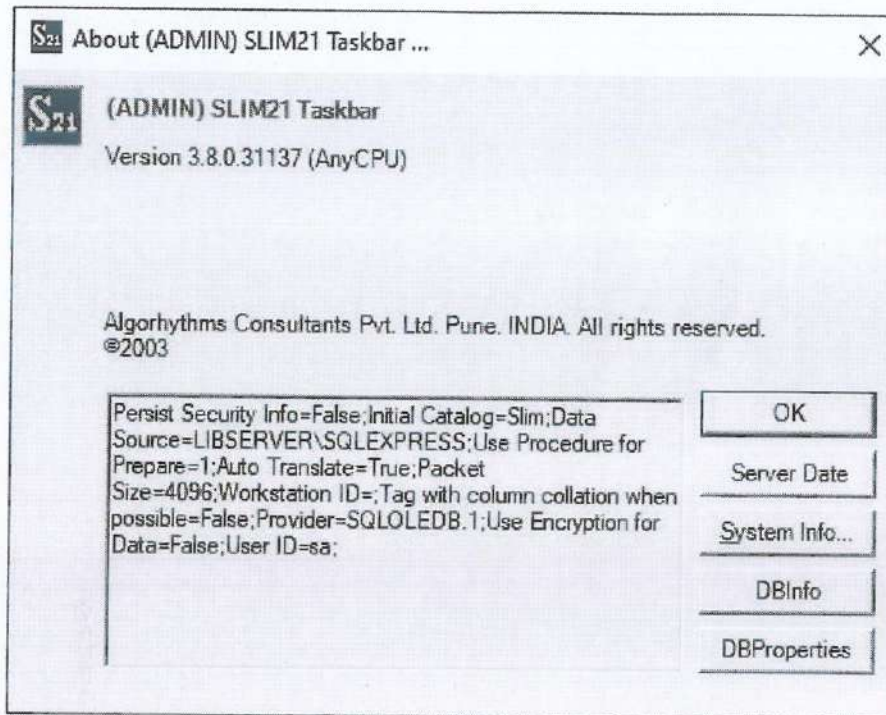
*[Signature]*

PRINCIPAL

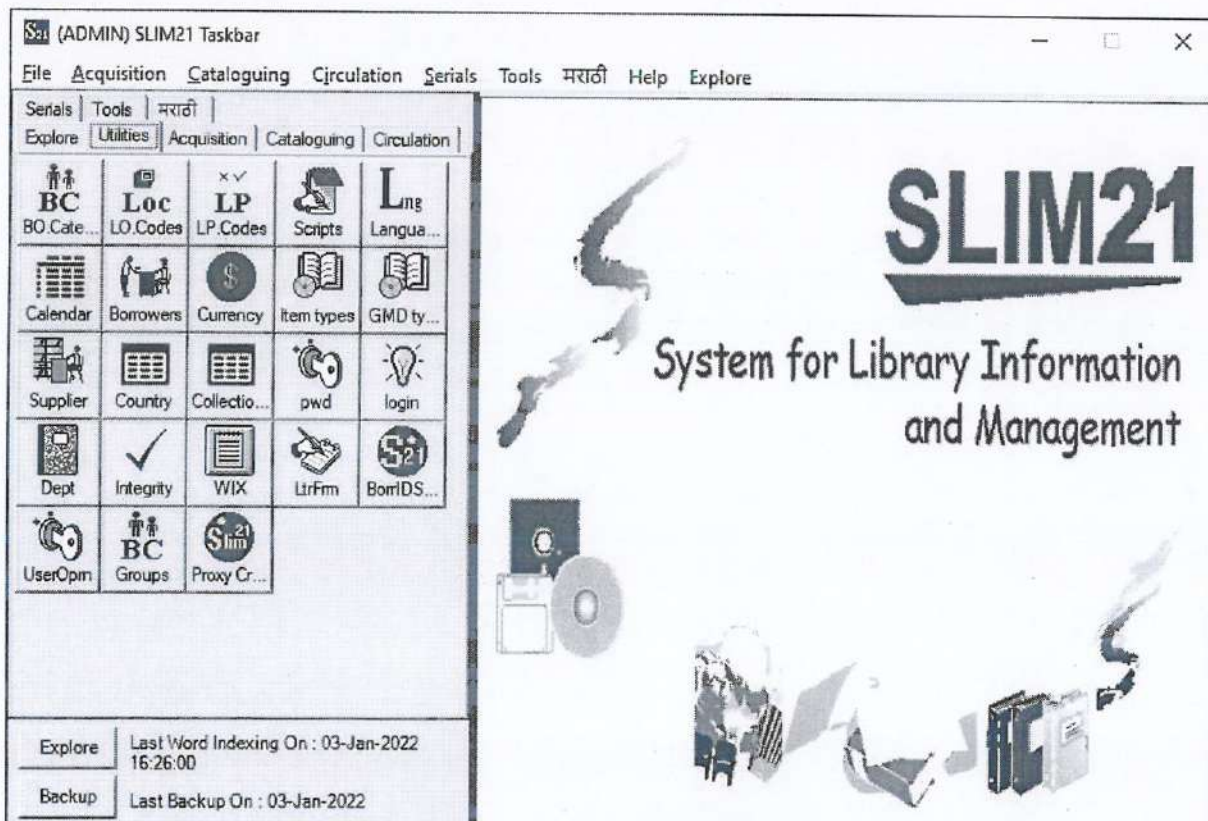
S.I.W.S. N.R. Swamy College of  
Commerce & Economics &  
Smt. Thirumalai College of Science,  
Wadala, Mumbai - 400 031



SLIM Interface - Integrated Library Management System used in Library



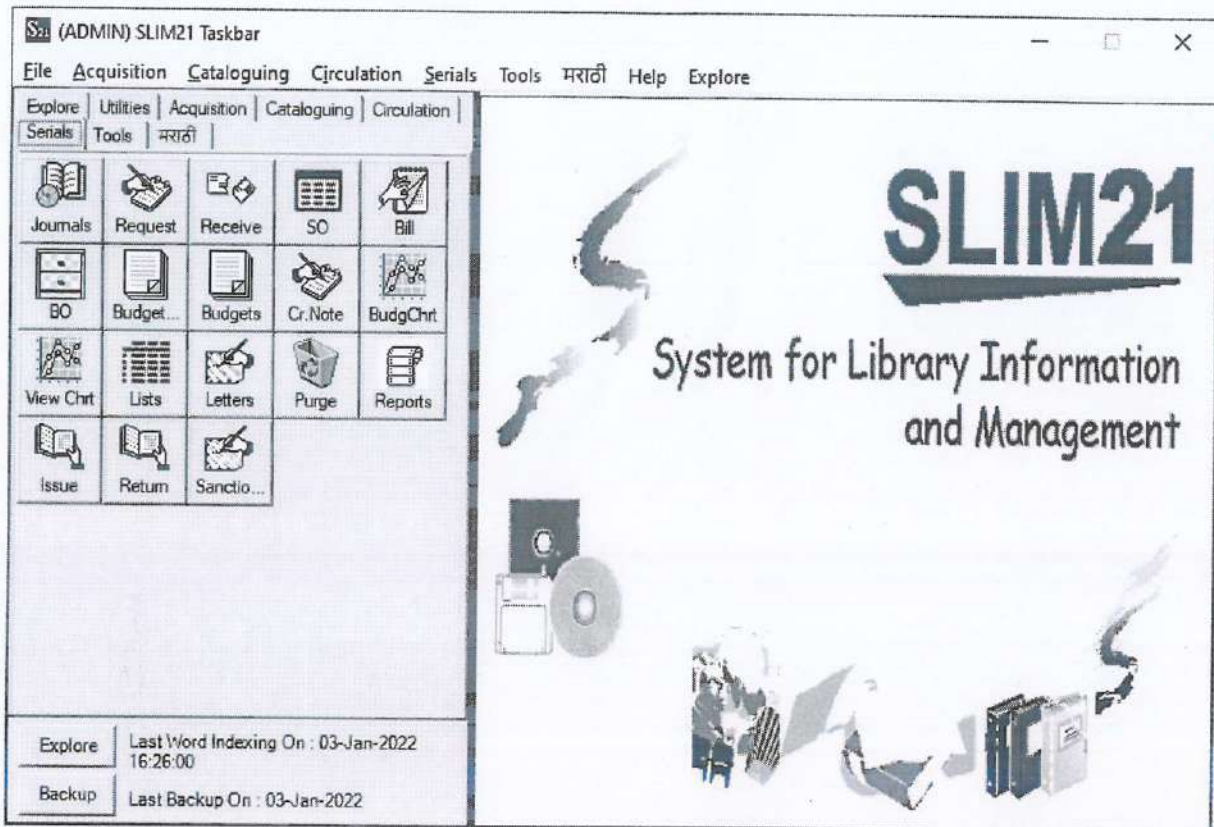
Utilities



*[Signature]*  
**PRINCIPAL**  
**SRS.N.R. Swamy College of**  
**Commerce & Economics and**  
**Smt. Yashumata College of Sct.**  
**Wadala, Mumbai-400 031**



Serial Section



(ADMIN) SLIM21 Taskbar

File Acquisition Cataloguing Circulation Serials Tools मराठी Help Explore

Explore Utilities Acquisition Cataloguing Circulation  
Serials Tools मराठी

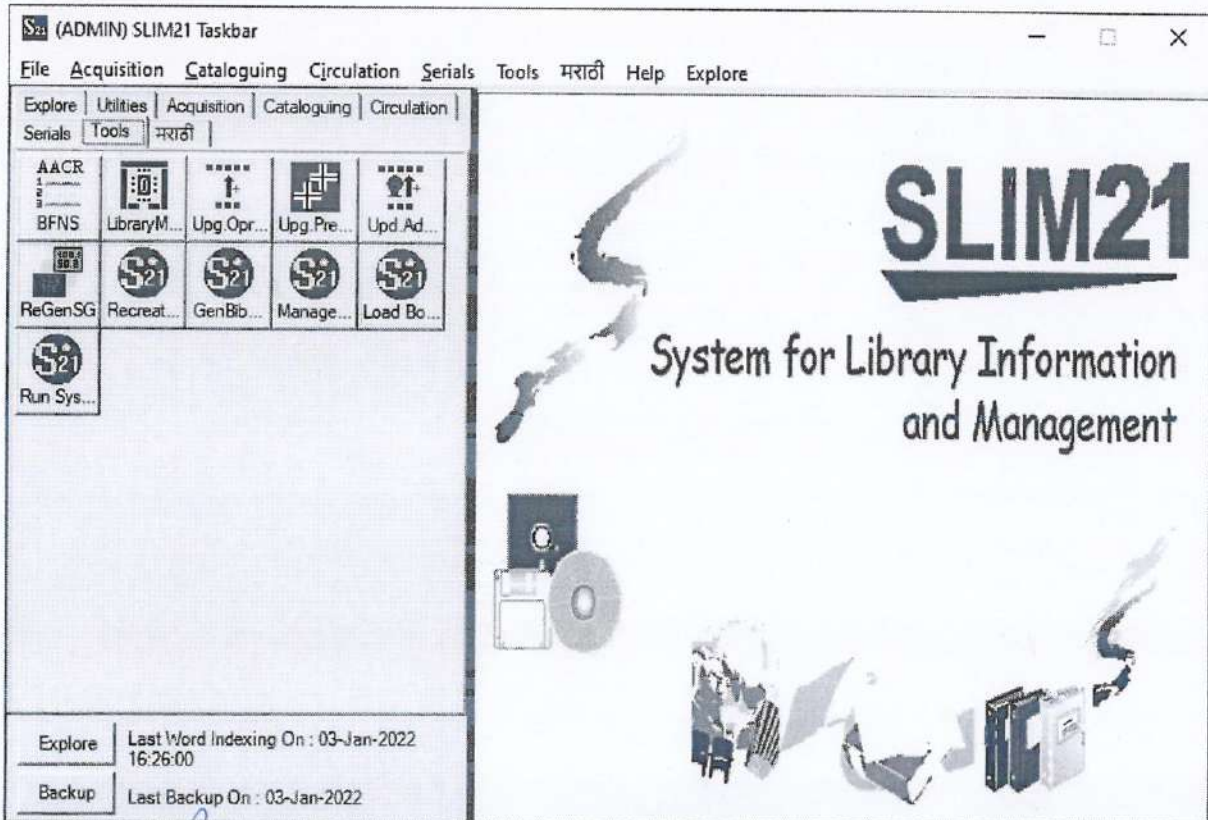
Journals Request Receive SO Bill  
BO Budget... Budgets Cr.Note BudgChrt  
View Chrt Lists Letters Purge Reports  
Issue Return Sanctio...

Explore Last Word Indexing On : 03-Jan-2022 16:26:00  
Backup Last Backup On : 03-Jan-2022

# SLIM21

System for Library Information and Management

Tools Section



(ADMIN) SLIM21 Taskbar

File Acquisition Cataloguing Circulation Serials Tools मराठी Help Explore

Explore Utilities Acquisition Cataloguing Circulation  
Serials Tools मराठी

AACR BFNS LibraryM... Upg. Opr... Upg. Pre... Upd. Ad...  
ReGenSG Recreat... GenBib... Manage... Load Bo...  
Run Sys...

Explore Last Word Indexing On : 03-Jan-2022 16:26:00  
Backup Last Backup On : 03-Jan-2022

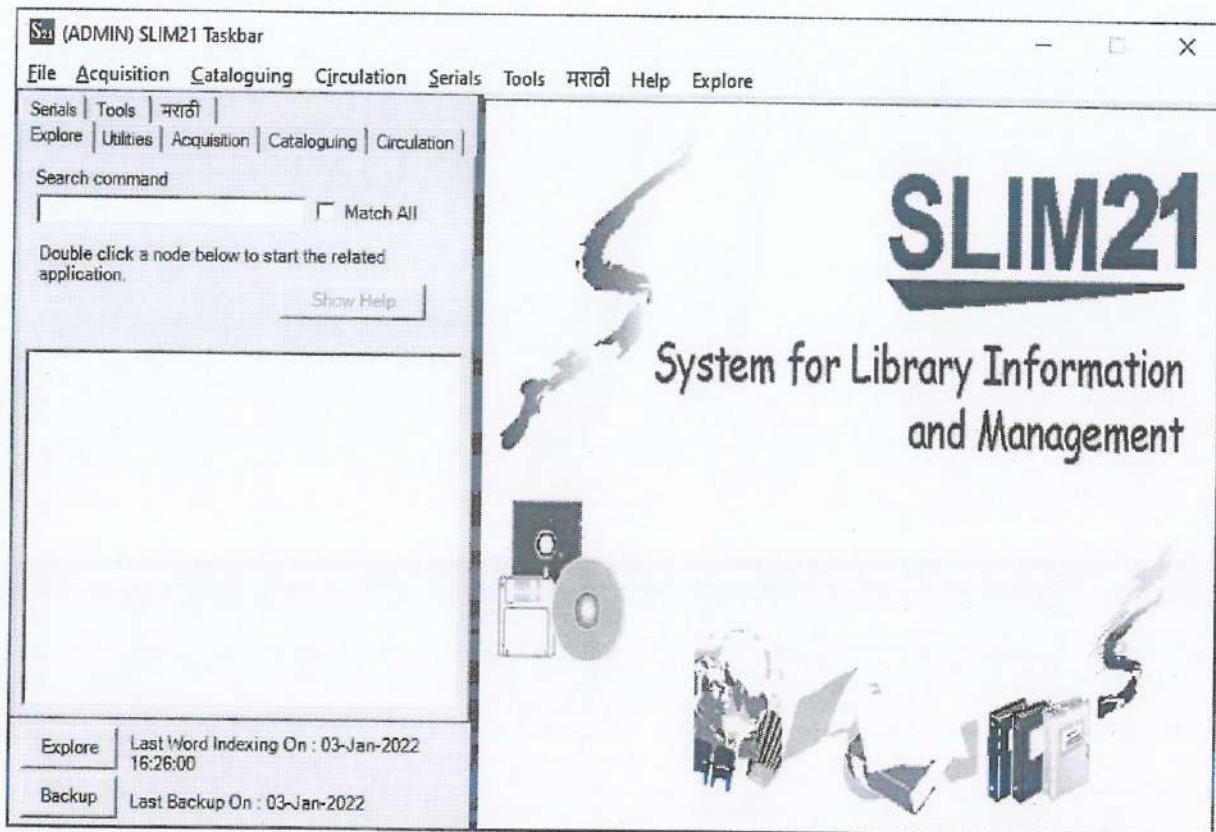
# SLIM21

System for Library Information and Management

*Shruti*  
**PRINCIPAL**  
 S.L.W.S. N.R. Swamy College of  
 Commerce & Economics and  
 Smt. Tukumala College of Science  
 Wadala, Mumbai-400 021



## Explore Section



(ADMIN) SLIM21 Taskbar

File Acquisition Cataloguing Circulation Serials Tools मराठी Help Explore

Serials Tools मराठी

Explore Utilities Acquisition Cataloguing Circulation

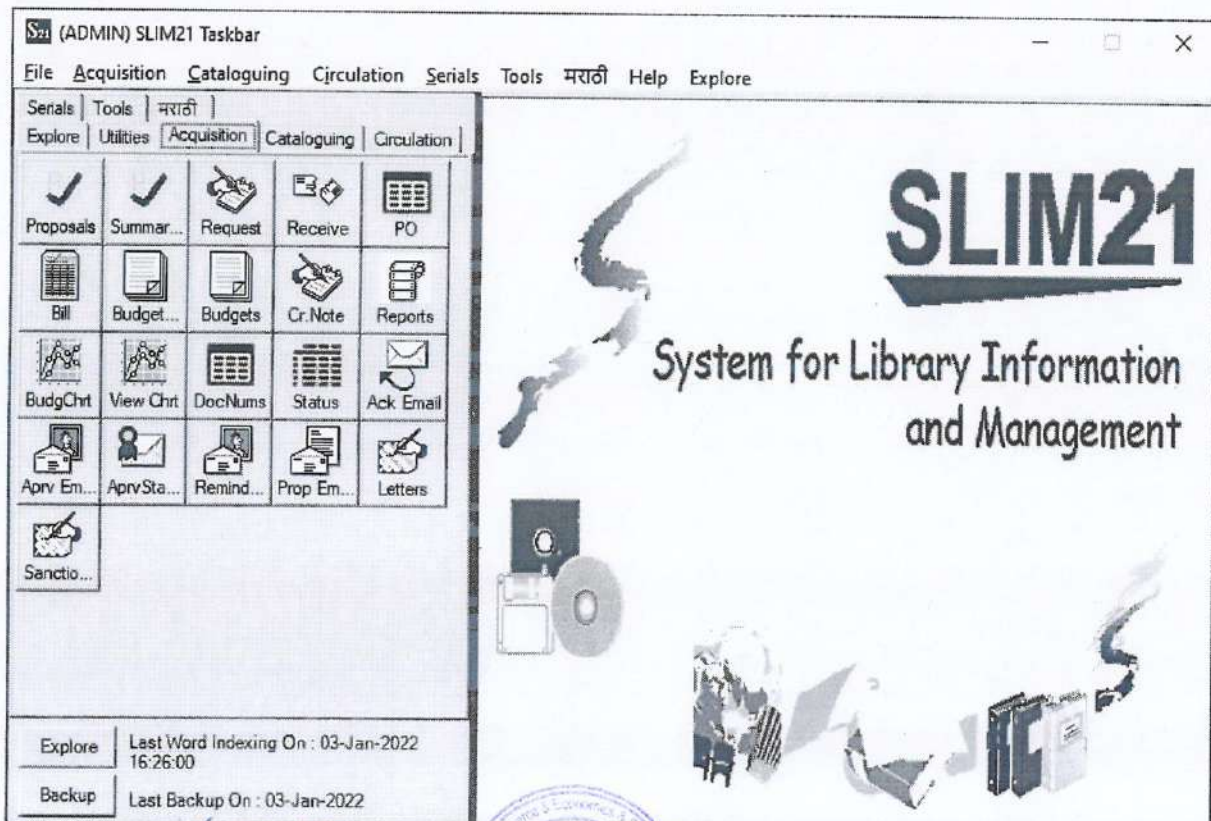
Search command   Match All

Double click a node below to start the related application.

Explore Last Word Indexing On : 03-Jan-2022 16:26:00

Backup Last Backup On : 03-Jan-2022

## Acquisition Section



(ADMIN) SLIM21 Taskbar

File Acquisition Cataloguing Circulation Serials Tools मराठी Help Explore

Serials Tools मराठी

Explore Utilities Acquisition Cataloguing Circulation

Proposals Summar... Request Receive PO

Bill Budget... Budgets Cr. Note Reports

BudgChrt View Chrt DocNums Status Ack Email

Aprv Em... AprvSta... Remind... Prop Em... Letters

Sanctio...

Explore Last Word Indexing On : 03-Jan-2022 16:26:00

Backup Last Backup On : 03-Jan-2022

PRINCIPAL  
 Smt. N.R. Swamy College of  
 Commerce & Economics and  
 Smt. Tukarama College of Science  
 Wadala, Mumbai 400 031



## Cataloguing

(ADMIN) SLIM21 Taskbar

File Acquisition Cataloguing Circulation Serials Tools मराठी Help Explore

Serials Tools मराठी

Explore Utilities Acquisition Cataloguing Circulation

Browse Accn Reg New Item Reports **Catalogue Reports** Purge

Formats AuthEdit Subjects Submit... SeeAlso

Principal... AddEdit... AccnSe... MergeC... BulkDo...

SLIM21  
System for Library Information and Management

Explore Last Word Indexing On : 03-Jan-2022 16:26:00

Backup Last Backup On : 03-Jan-2022

## Circulation

(ADMIN) SLIM21 Taskbar

File Acquisition Cataloguing Circulation Serials Tools मराठी Help Explore

Serials Tools मराठी

Explore Utilities Acquisition Cataloguing Circulation

I/R Mgmt BorrList Rules Stock

Letters Reports Copy D... One Item Purge

Accnbar Spine L... Book La... Borrbar ID Cards

Collect Ovdu No Dues TXCount Book B...

BB

SLIM21  
System for Library Information and Management

Explore Last Word Indexing On : 03-Jan-2022 16:26:00

Backup Last Backup On : 03-Jan-2022

*[Signature]*  
**PRINCIPAL**  
 S.I.W.S. N.R. Swamy College of  
 Commerce & Economics and  
 Smt. Thirumala College of Science  
 Wadala, Mumbai-400 031





## Library Information

(ADMIN) SLIM21 Library Information

File Data Help

Library Details

Library Code  Library Name  Library Mnemonic

Default Location  Path For Library Logo

Library Address


Logo Alignment  Logo Height  Logo Width

Library Name On ICard  Librarian Name  Librarian Designation

Library Email  Fax Number  Phone Number

City  State  Country

Pin Code Number

  
**PRINCIPAL**  
S.L.W.S. N.R. Swamy College of  
Commerce & Economics and  
Smt. Thirumalai College of Science,  
Wadala, Mumbai-400 031



## Journal Listings Section

S21 (ADMIN) SLIM21 Serials Control: Journal Listings
\_ □ ×

File Options Help

🏠 📄

Select a report

- Alphabetical List
- Journals and Loose Issue Locations
- Subject Wise List
- Journals with Subscription Types
- Publisher Wise List
- Agent Wise List
- Budget Wise List
- Frequency Wise List
- Delivery Mode Wise List
- Currency Wise List
- Department Wise List
- Country Wise List
- Alphabetical List: Vendor wise/Departme
- Alphabetical List: Online Journals

Subscription Dates
International
Budget Dates

Journal Type
Approval Status
Item Codes

Select All

Select one or more of Journal types from the adjoining list. Journals associated with any of the selected journal type get included in the report.

- Coden
- Daily, Weekly Publica
- Magazine
- News Letters
- Reports
- Journals

## Sample Report

SLIM21
\_ □ ×

File View

🏠 📄

Plan Report


SIWS  
N.R. Swamy College of Commerce & Economics and Smt. Thirumala College of Science, Wadala, Mumbai-400 031

**Alphabetical List of Journals**

08-Jan-2022 1

Title	Code	Publisher	SetNumber	Status	Ra
1 A C research	NU054			A	
2 Applied Finance	NU053			A	
3 Blavon's journal	ND091	Indian Academy of Sciences		A	
4 Bulletin of Materials Science	NA001	Indian Academy of Sciences	0210-4707	A	350.00
5 Business India	NA021			A	
6 Charter Secretary	ND041			A	
7 Competition affairs	NA029		65163-87	A	
8 Current Science	NA004	Current Science	0011-3591	A	1200.00
9 Down to Earth	NA026		0971-8079	A	
10 Dream 2047	ND097			A	
11 Economic and political weekly	NA095	Economic and political weekly	0012-9975	A	3000.00
12 Economic Digest	ND078			A	
13 External Affairs	ND042			A	
14 Entrepreneurship development	NU051			A	
15 Formae	NU047			A	
16 Frontline	NA007		0970-1710	A	350.00
17 India Journal of Physics	NA012			A	
18 Indian Journal of Chemistry sec 'B'	NA011			A	
19 Indian Journal of Chemistry Section 'A'	NA027			A	
20 Indian Journal of Heterocyclic Chemistry	NA008	Current Science associated Management		A	
21 Indian Journal of marketing	NA003	Consultant (Pvt)	0973-8703	A	1200.00
22 Indian management	ND013			A	
23 Indian Science abstract	NA013			A	
24 Journal of accounting and finance	NA019			A	
25 Journal of Astrophysics and Astronomy	NA020			A	
26 Journal of bank management	NU055			A	

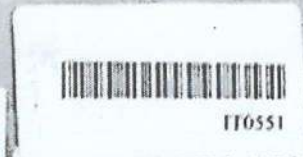
Current Page No.: 1
Total Page No.: 2
Zoom Factor: 100%

  
**PRINCIPAL**  
 S.I.W.S. N.R. Swamy College of  
 Commerce & Economics and  
 Smt. Thirumala College of Science,  
 Wadala, Mumbai-400 031

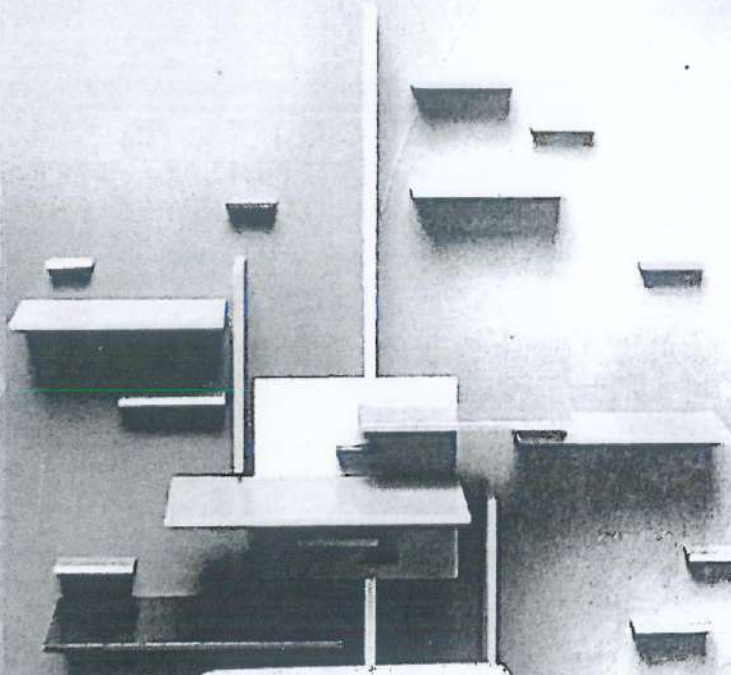




# ARM System Developers Guide



Designing and  
Optimizing System  
Software



005.1  
S10  
I.T. 551

5T402287

Andrew N. SLOSS  
Dominic SYMES  
Chris WRIGHT

*[Signature]*  
PRINCIPAL  
B.I.W.S. N.R. Swamy College of  
Commerce & Economics &  
Smt. Thirumalai College of Science,  
Wadala, Mumbai 400 031





IT. 0 551

Mnemonics	ARM ISA	Description
QADD	v5E	signed saturated 32-bit add
QDADD	v5E	signed saturated double and 32-bit add
QDSUB	v5E	signed saturated double and 32-bit subtract
QSUB	v5E	signed saturated 32-bit subtract
RSB	v1	reverse subtract of two 32-bit values
RSC	v1	reverse subtract with carry of two 32-bit integers
SBC	v1	subtract with carry of two 32-bit values
SMLAxy	v5E	signed multiply accumulate instructions $((16 \times 16) + 32 = 32\text{-bit})$
SMLAL	v3M	signed multiply accumulate long $((32 \times 32) + 64 = 64\text{-bit})$
SMLALxy	v5E	signed multiply accumulate long $((16 \times 16) + 64 = 64\text{-bit})$
SMLAWy	v5E	signed multiply accumulate instruction $((32 \times 16) \gg 16) + 32 = 32\text{-bit})$
SMULL	v3M	signed multiply long $(32 \times 32 = 64\text{-bit})$
SMULxy	v5E	signed multiply instructions $(16 \times 16 = 32\text{-bit})$
SMULWy	v5E	signed multiply instruction $((32 \times 16) \gg 16 = 32\text{-bit})$
STC STC2	v2 v5	store to memory single or multiple 32-bit values from coprocessor
STM	v1	store multiple 32-bit registers to memory
STR	v1 v4 v5E	store register to a virtual address in memory
SUB	v1	subtract two 32-bit values
SWI	v1	software interrupt
SWP	v2a	swap a word/byte in memory with a register, without interruption
TEQ	v1	test for equality of two 32-bit values
TST	v1	test for bits in a 32-bit value
UMLAL	v3M	unsigned multiply accumulate long $((32 \times 32) + 64 = 64\text{-bit})$
UMULL	v3M	unsigned multiply long $(32 \times 32 = 64\text{-bit})$

551

Smt. Thirumalai College of Science  
Wadala, Mumbai - 400 031



*[Handwritten Signature]*

PRINCIPAL  
S.J.W.S. N.R. Swamy College of  
Commerce & Economics &  
Smt. Thirumalai College of Science,  
Wadala, Mumbai - 400 031

